

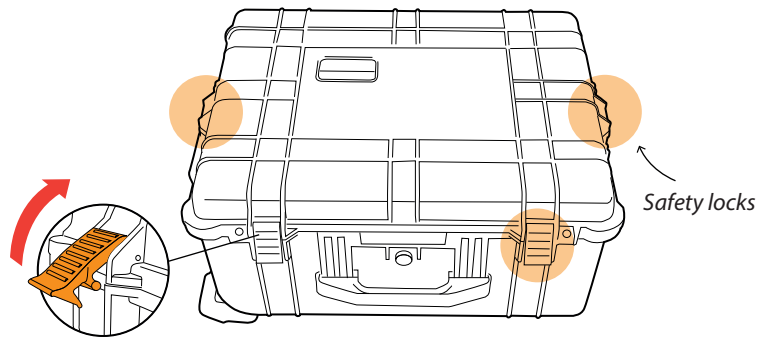
Virtual Reality

INSTRUCTIONS

Configuration and use of VR
Extinción de Incendios.

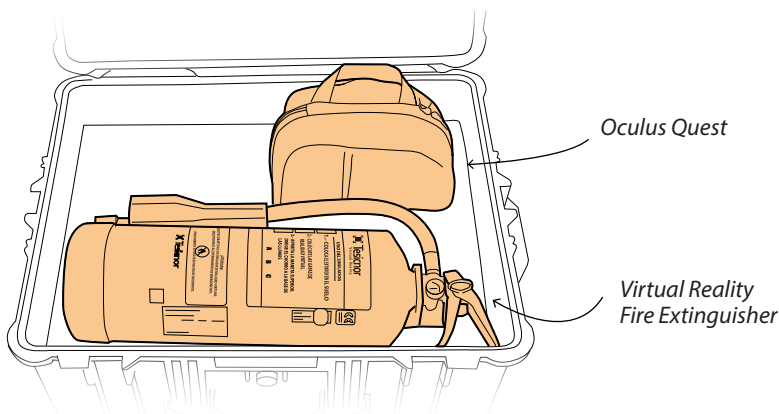


STEP 1

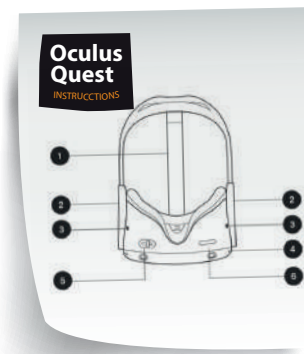


To open the transport case, place it horizontally.

STEP 2

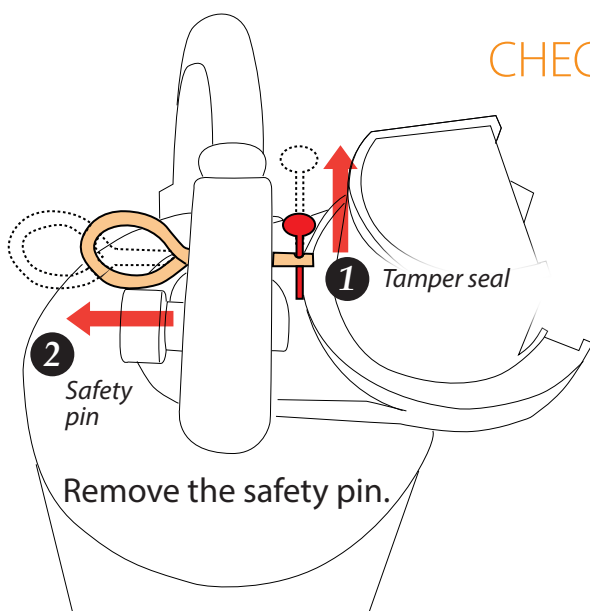


Content of the suitcase.

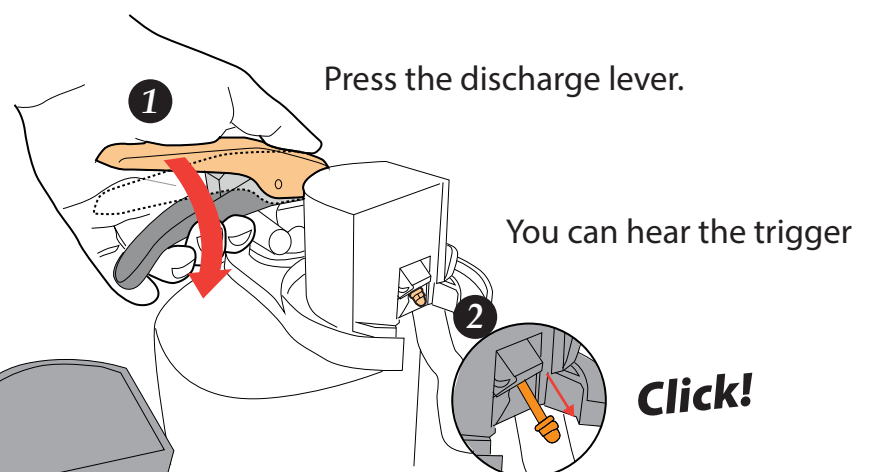


Take out the items and read the Oculus Quest Quick Guide.

STEP 3: CHECKING THE OPERATION



Remove the safety pin.



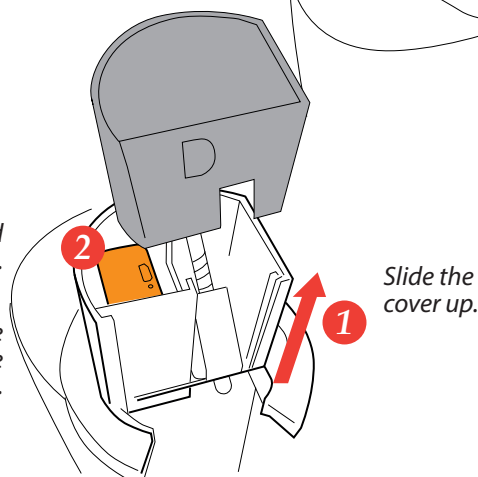
Press the discharge lever.

You can hear the trigger

Click!

Check the connection and adjust if it is loose.

If it still does not work, replace the battery with a new one (included in the kit).

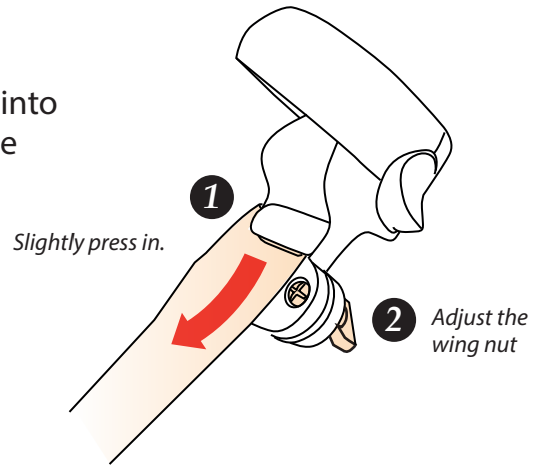
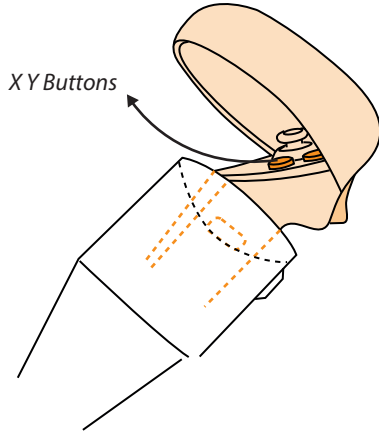


Slide the cover up.

If does not work

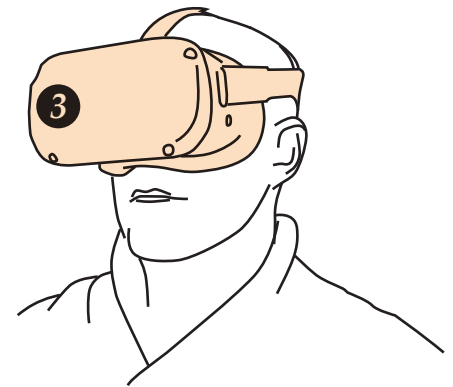
STEP 4

Fit the left controller of the Oculus (with X,Y buttons) into the nozzle of the fire extinguisher, positioning the side button next to the indentation.

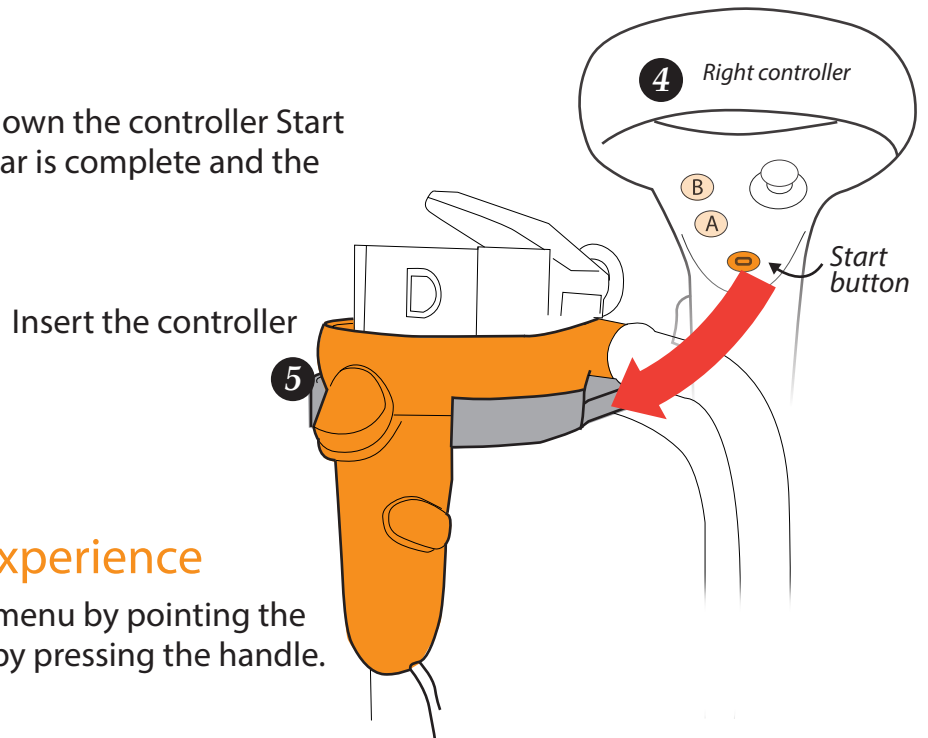


STEP 5

- 3 Put on the glasses, select the application:
APPLICATIONS – ALL (choose between):
- Firefighting
 - Training



Go to the play area.
Look straight ahead and hold down the controller Start button, 4 until the loading bar is complete and the stage is re-centering .



STEP 6

VR eXtinguisher experience

Select the scene from the main menu by pointing the fire extinguisher and confirming by pressing the handle.

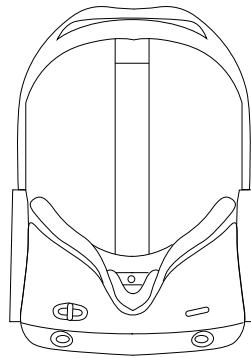
Virtual Reality

OCULUS QUEST

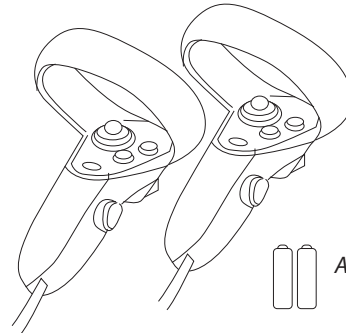
Use of Virtual Reality goggles



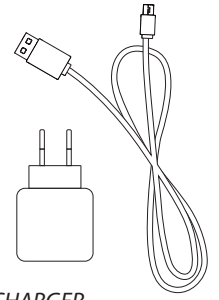
STEP 1



GOGGLES / HEADSET



TOUCH CONTROLLERS



CHARGER

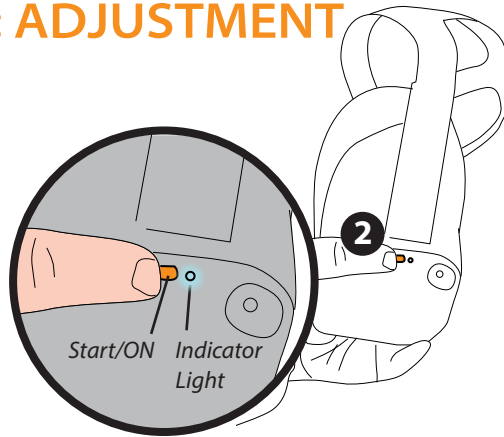


AA BATTERIES

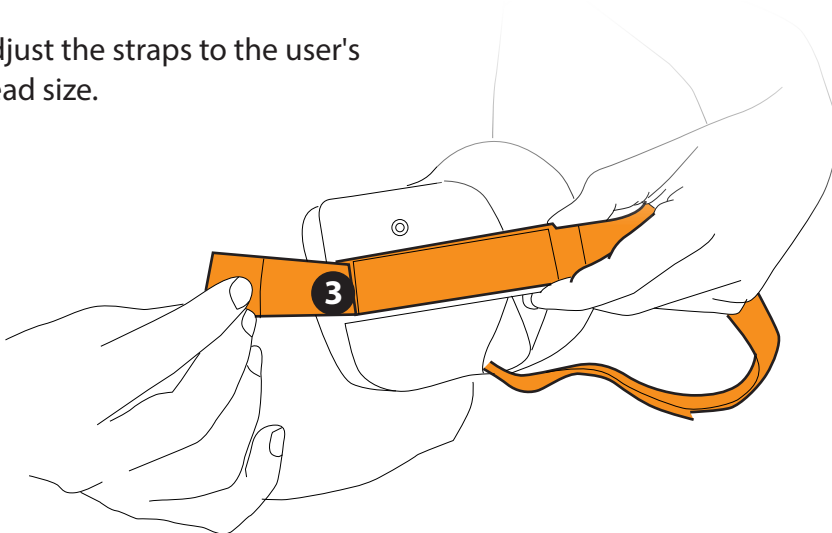
Open the case and check all the items.

STEP 2: ADJUSTMENT

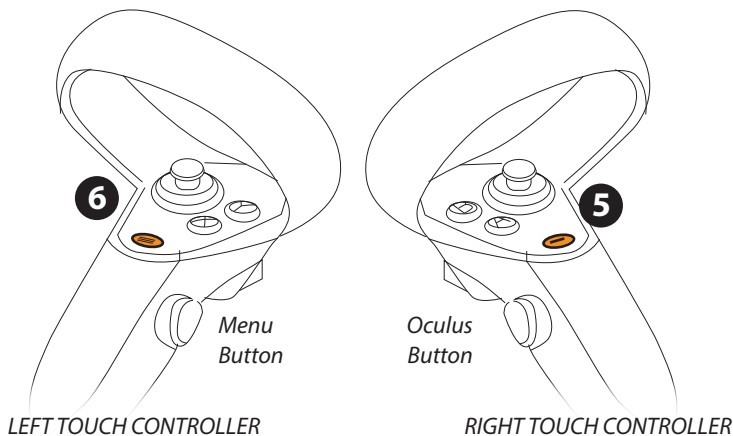
Press three seconds the ON button to switch on the goggles.



Adjust the straps to the user's head size.



Put on the headset and, if necessary, readjust the velcro straps.



Grasp the touch controllers.
If they do not switch on automatically, press for three seconds.
The OCULUS button on the right controller **5** and MENU on the left. **6**

STEP 3: PLAY AREA SETUP

CONFIGURATION OF THE GUARDIAN SYSTEM

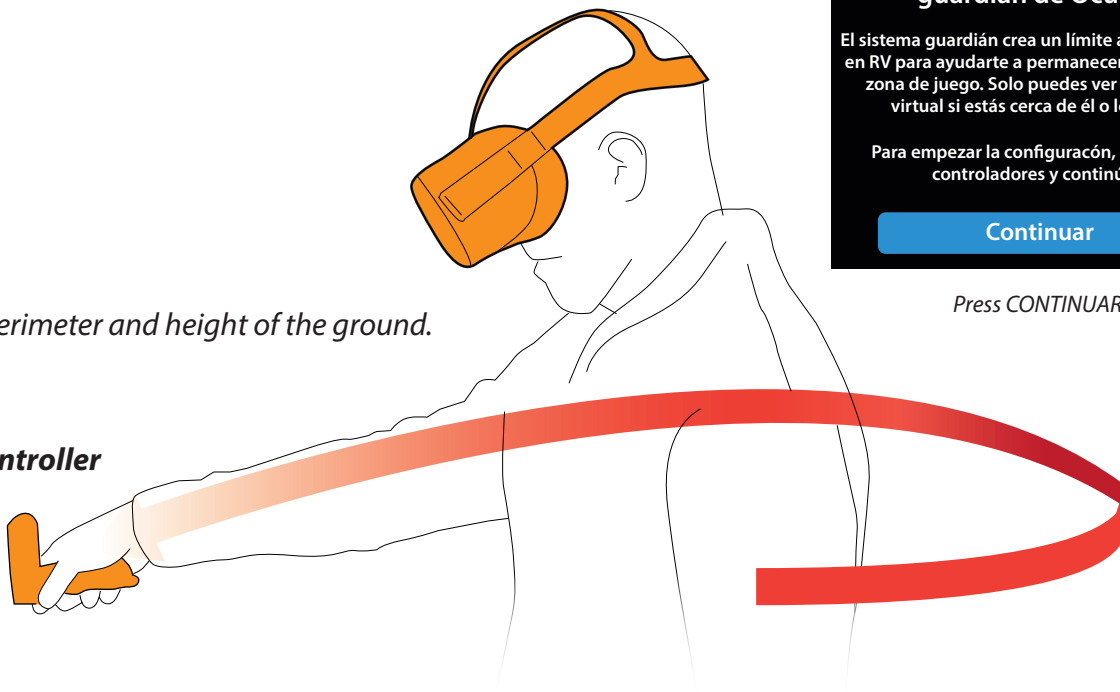
In order for the virtual experience to proceed without incident, the "playing field" must be defined before beginning.

In this way, when the user goes out of these limits, as a security mode, the real environment is displayed.

Play area

Defined: Perimeter and height of the ground.

Right controller



Press CONTINUAR

Follow the instructions to complete the safety area.

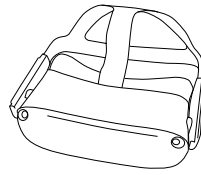
Virtual Reality

STREAMING CONNECTION

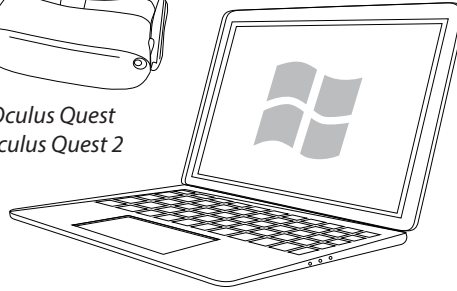


EQUIPMENT

How to start live-streaming



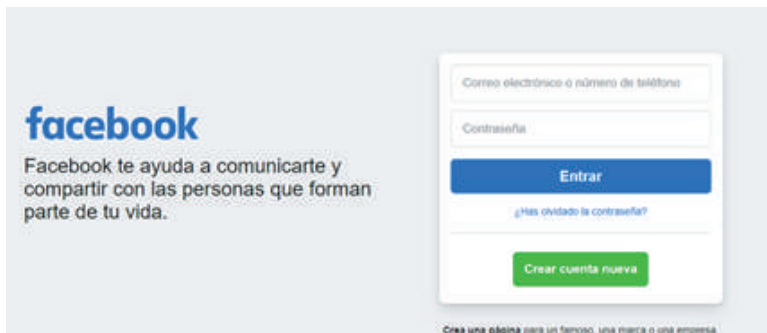
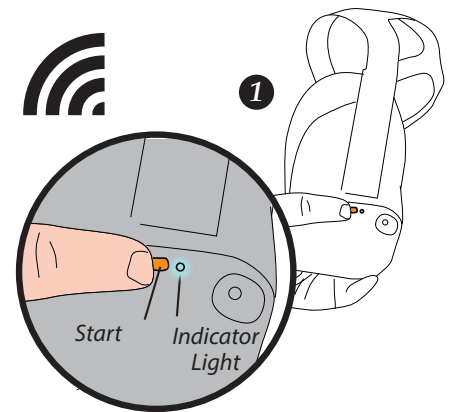
Oculus Quest
Oculus Quest 2



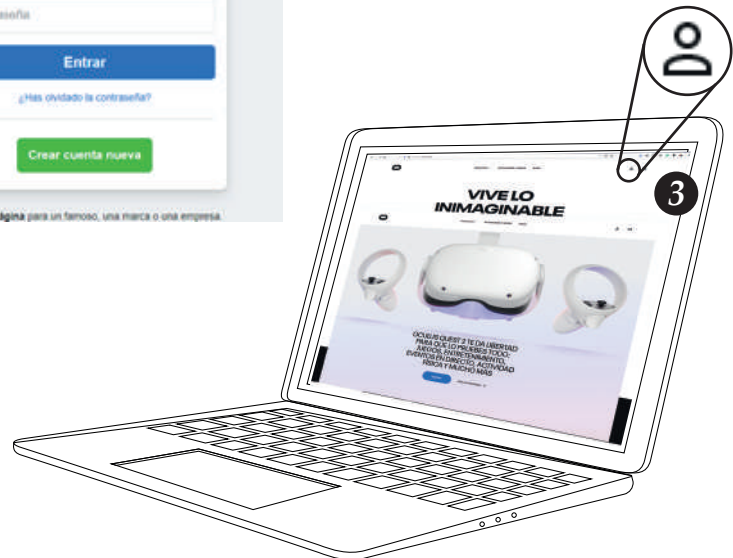
Computer with Wi-Fi connection
(min. Windows 8)

STEP 1

- 1 Connect the PC or laptop and the goggles to the same network.
- 2 Enter the **Facebook.com** page and introduce the username and password of our goggles.
(Supplied with the kit).



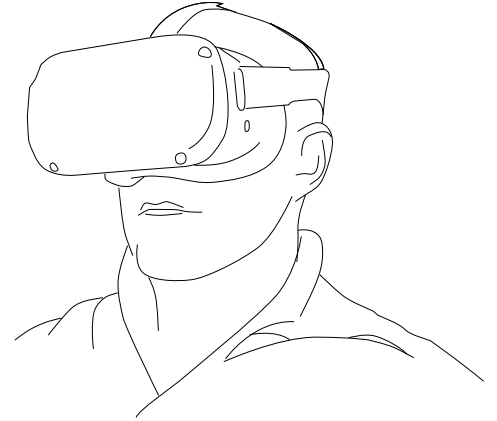
- 3 Open the **Oculus.com** page and click on the user icon.




- 4 Use the oculus user account
(Included).



- 4 Enter in **Oculus.com/casting**
Recommended browser:
Google Chrome.



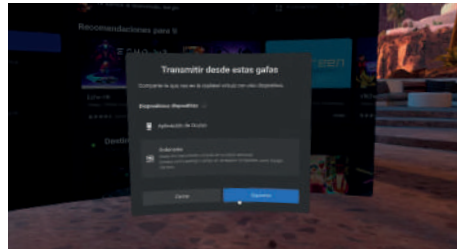
 Press the **Oculus Button** to open de Universal menu

 Go to **Sharing** **5** In the glasses press **SHARING**

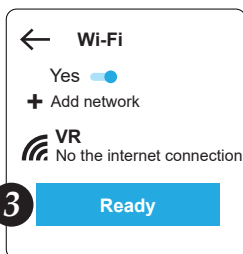
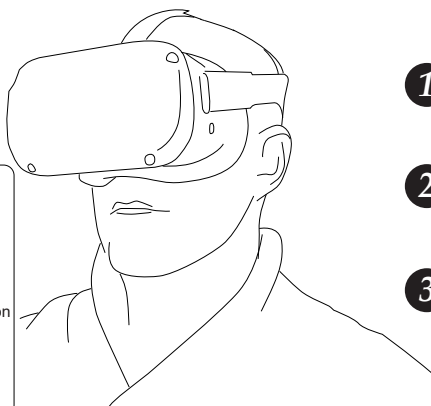
 Select **Cast** **6** **CAST**

 Select **Computer** **7** **COMPUTER**

- 8 The contents of the goggles will be displayed on the screen.



Connection problems?



- 1 Check the PC and the goggles are connected to the same Wi-Fi network.
- 2 Check the goggles and the website have the same user-assigned.
- 3 Access from the lower tab of the Oculus Quest menu to **CONFIGURATION - WI-FI**.